



ANADIA

Coliving & Coworking Project

ANADIA - PHYLOSOPHY

Coliving and coworking in a **peaceful environment**, away from the hustle of the city, where you can **meet new people** and focus on your work in a fully renovated building. The house comes with a **private garden**, a perfect spot for relaxation and events organization. The presence of **like-minded people** will make the community truly special.



Collaborate, learn, **LIVE and WORK** together, as you inspire and support each other!

ANADIA - OFFER

We offer a business idea of accommodation in the fully renovated house with 393 m² of useful area. The building consists of a ground floor, first floor and outdoor space. In the house there are 13 rooms, 4 kitchens, 11 bathrooms, a common living area, laundry, terrace and a big garden with an outdoor parking, including barbecue and leisure area, fully fenced. The capacity of tenants is up to 26 persons.

Name:	Description:	Gross area, m²:	Net area, m²:
Room (2)	2 window queen room	13,4	11
Room (4)	1 window queen room	13,8	12,1
WC (5)	Room (2) + Room (4)	4,4	3,7
Suite (1)	Independent 2 entrance queen suite with a private bathroom	30	25,8
Laundry (6)	Common access	7,1	4,6
Common kitchen	Large size fully-equipped for 12 persons	30,1	25,1
Common living room	Co-working/ relaxing space	34,8	31
Technical room	Heat pumps for water heating	6,2	5

ANADIA - OFFER

Name:	Description:	Gross area, m²:	Net area, m²:
T0 (8)	Independent entrance apartment	22,8	19,3
Suite (9)	Independent entrance suite	15,8	13,6
Suite (13)	Interior entrance with a balcony suite	14,6	13
Suite (14)	2 window interior entrance with a balcony suite	16,5	14,2
Suite (15)	2 window interior entrance suite	19,1	16,1
Suite (16)	1 window interior entrance suite	16,2	14,1
T1 (17)	Interior entrance apartment	29,9	25
T3	Independent entrance with a terrace and 2 bathrooms	89,8	53,8
Parking area	8 lots	106	
Garden	Leisure zones	213	
Barbecue zone	Kitchen with dinning area	35	

ANADIA - LOCATION

The renovated house is located **in the heart of a small Portuguese town - Anadia**. Here you will find **charming cafes and restaurants** that offer traditional flavors. You can immerse yourself in the **local culture**, exploring the history and connecting with the **community**. The location is well-connected through **public transportation**, allowing you to easily access nearby cities and beaches whenever you desire.



Comfortable living and **creative space** in a small town surrounded by nature.

ANADIA - GROUND FLOOR

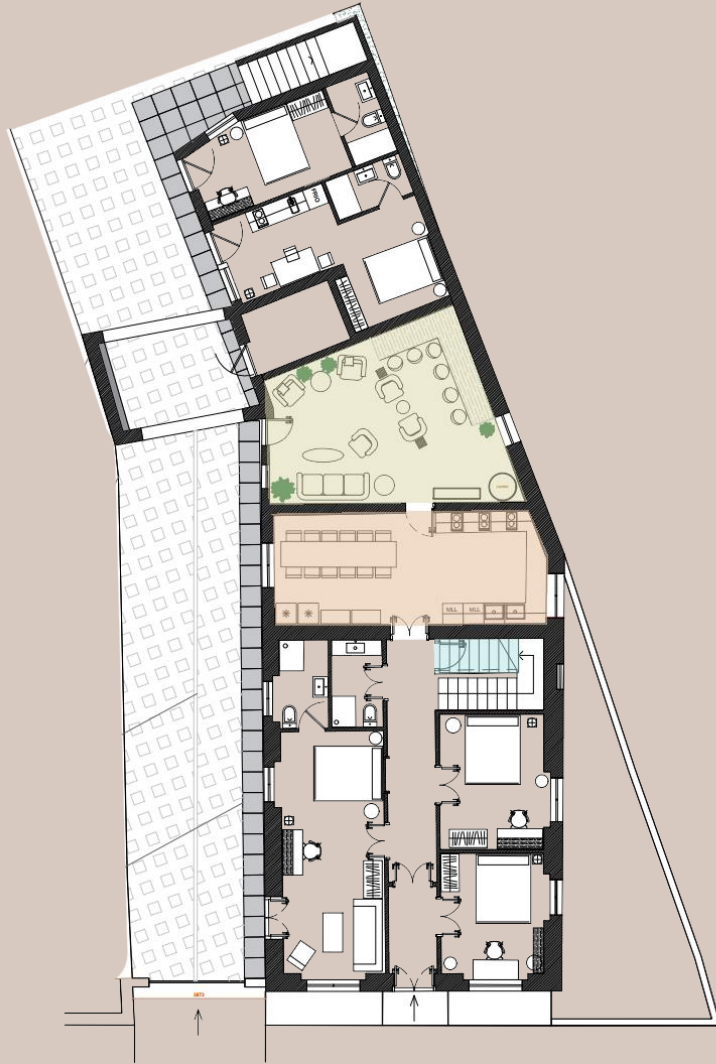


- **TWO INDEPENDENT SUITES WITH A BATHROOM**
- **ONE STUDIO WITH A PRIVATE BATHROOM AND INDEPENDENT ENTRANCE**



TO ADD

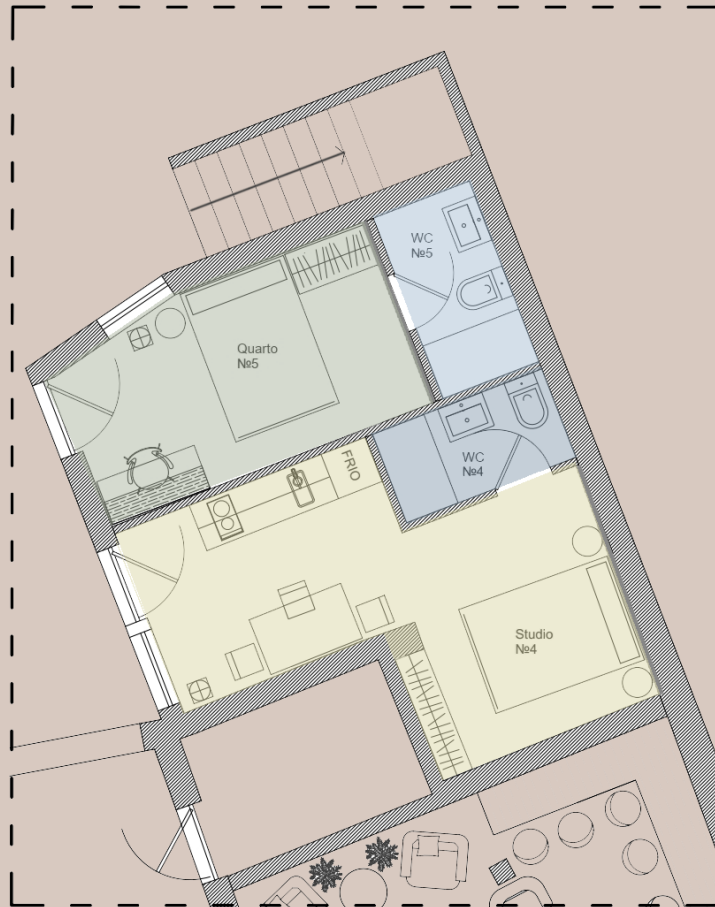
ANADIA - GROUND FLOOR



- COMMON AREA: LIVING ROOM + KITCHEN + LAUNDRY



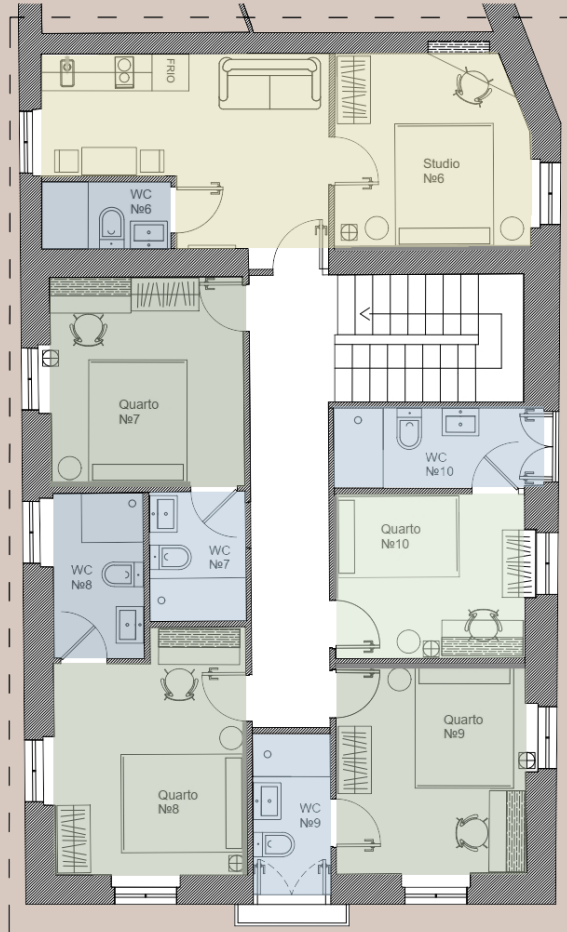
ANADIA - GROUND FLOOR



- SUITE WITH A PRIVATE BATHROOM AND INDEPENDENT ENTRANCE
- STUDIO + KITCHEN + PRIVATE BATHROOM WITH INDEPENDENT ENTRANCE



ANADIA - FIRST FLOOR

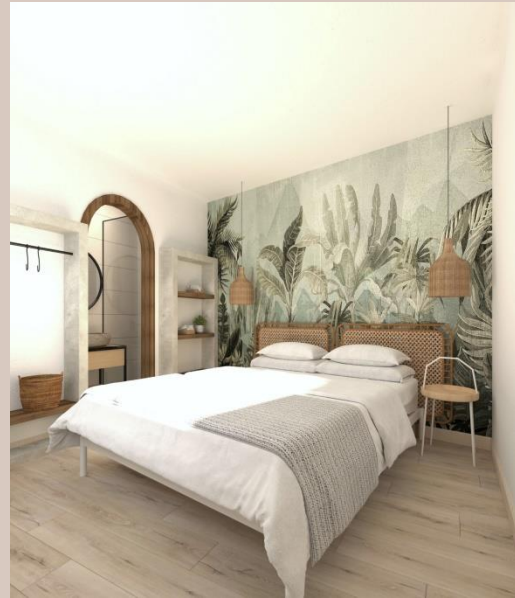


- T1 WITH A PRIVATE BATHROOM AND KITCHEN
- FOUR SUITES WITH A PRIVATE BATHROOM + TWO BALCONIES

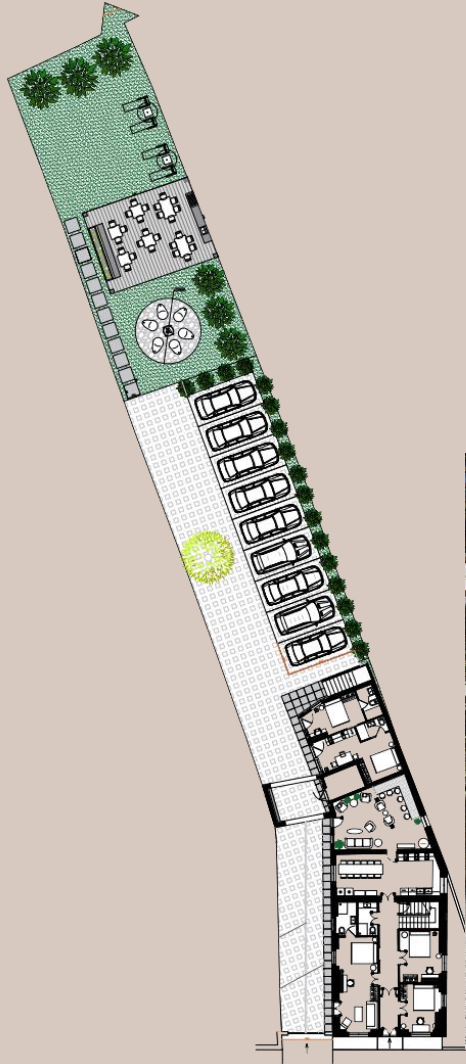


ANADIA - FIRST FLOOR

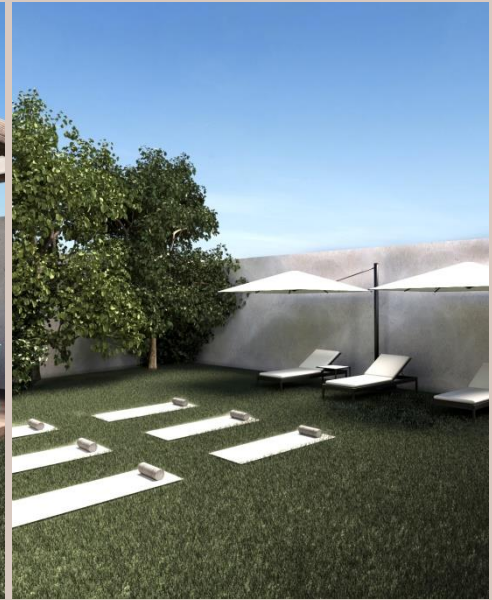
- T3 WITH A TERRACE AND INDEPENDENT ENTRANCE
- THREE SUITES WITH TWO BATHROOMS
- COMMON LIVING AREA + KITCHEN



ANADIA - GARDEN



- GARDEN WITH PARKING AREA
- FIRE ZONE
- BARBECUE AREA WITH KITCHEN
- AREA FOR LEISURE, EVENTS, PHYSICAL ACTIVITIES



ANADIA

INTERESTED IN THE INVESTMENT?

CONTACT US:



+351 000 000



xxx@xxx.com